

# Trade of the Week

Thursday March 5, 2026



6,869.49 SELL 0.00 6,869.49 BUY

EMA 50 close 6,877.63

# Trade of the Week

## Trade of the Week Summary

Long S&P 500 with Collar | Downside Volatility Dampener

Underlying: SPX @ 6880

Theme: Elevated volatility and weakening tape; maintain core exposure while dampening near-term downside risk

Structure (April 16, 2026 Expiry):

Buy: 6535 Put @ 67.00

Sell: 7100 Call @ 51.00

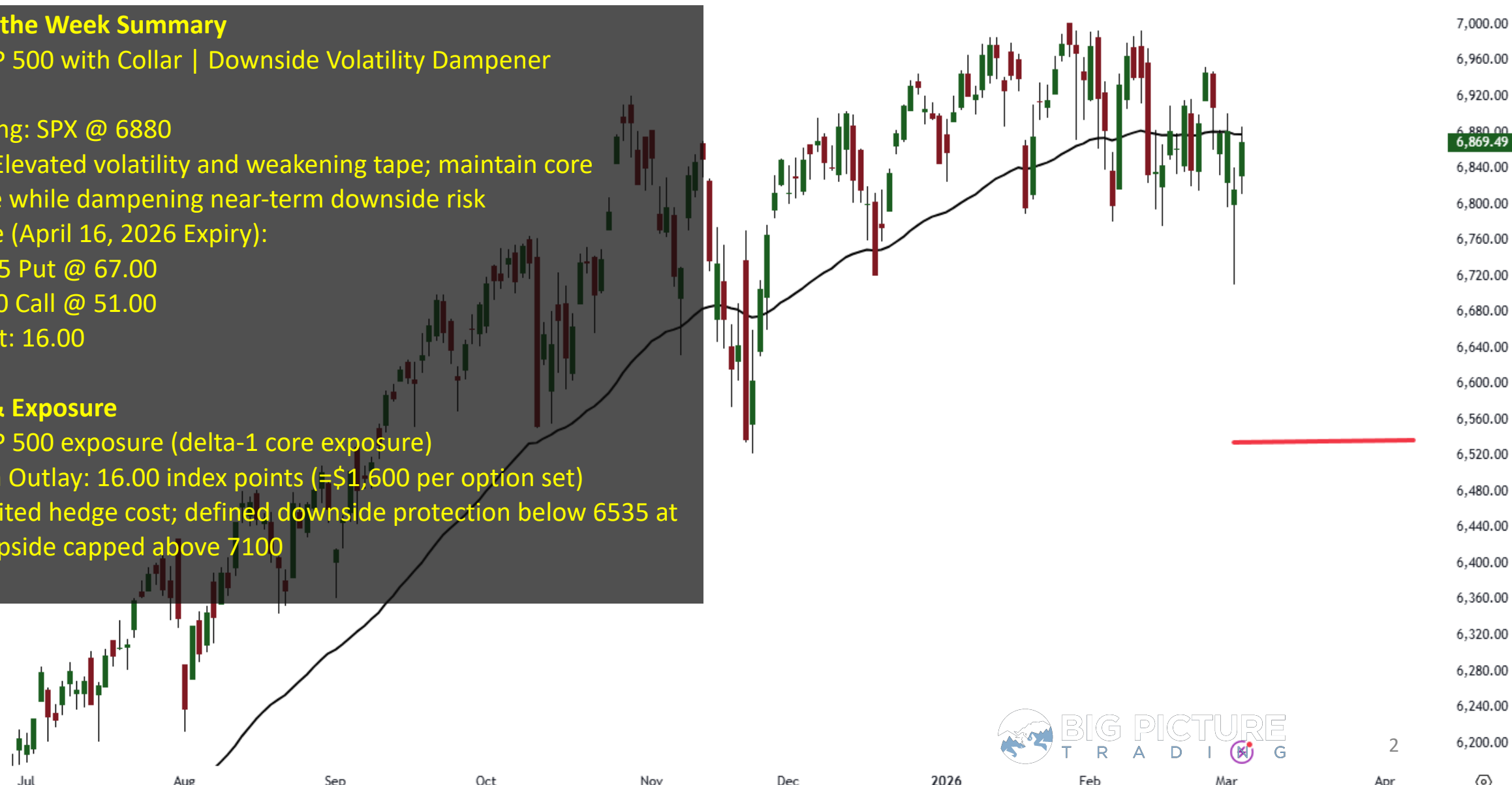
Net Debit: 16.00

## Capital & Exposure

Long S&P 500 exposure (delta-1 core exposure)

Premium Outlay: 16.00 index points (=\$1,600 per option set)

Risk: Limited hedge cost; defined downside protection below 6535 at expiry; upside capped above 7100



6,865.50 SELL 0.25 6,865.75 BUY

EMA 50 close 6,898.53

# S&P500 Futures



USD

7,100.00

7,000.00

6,900.00

6,865.50

14:35:26

6,800.00

6,700.00

6,600.00

6,500.00

6,400.00

6,300.00

6,200.00

6,100.00

6,000.00

5,900.00

5,800.00

5,700.00

5,600.00

5,500.00

5,400.00

5,300.00

5,200.00

5,100.00

5,000.00

4,900.00



3

5,583.90  
SELL 0.00 5,583.90  
BUY

EMA 50 close 5,105.82

# KOSPI South Korea Index



98.989 SELL 0.000 98.989 BUY

EMA 50 close 98.009

# US Dollar Index

USD

106.000

105.500

105.000

104.500

104.000

103.500

103.000

102.500

102.000

101.500

101.000

100.500

100.000

99.500

98.989  
16:33:37

98.500

98.000

97.500

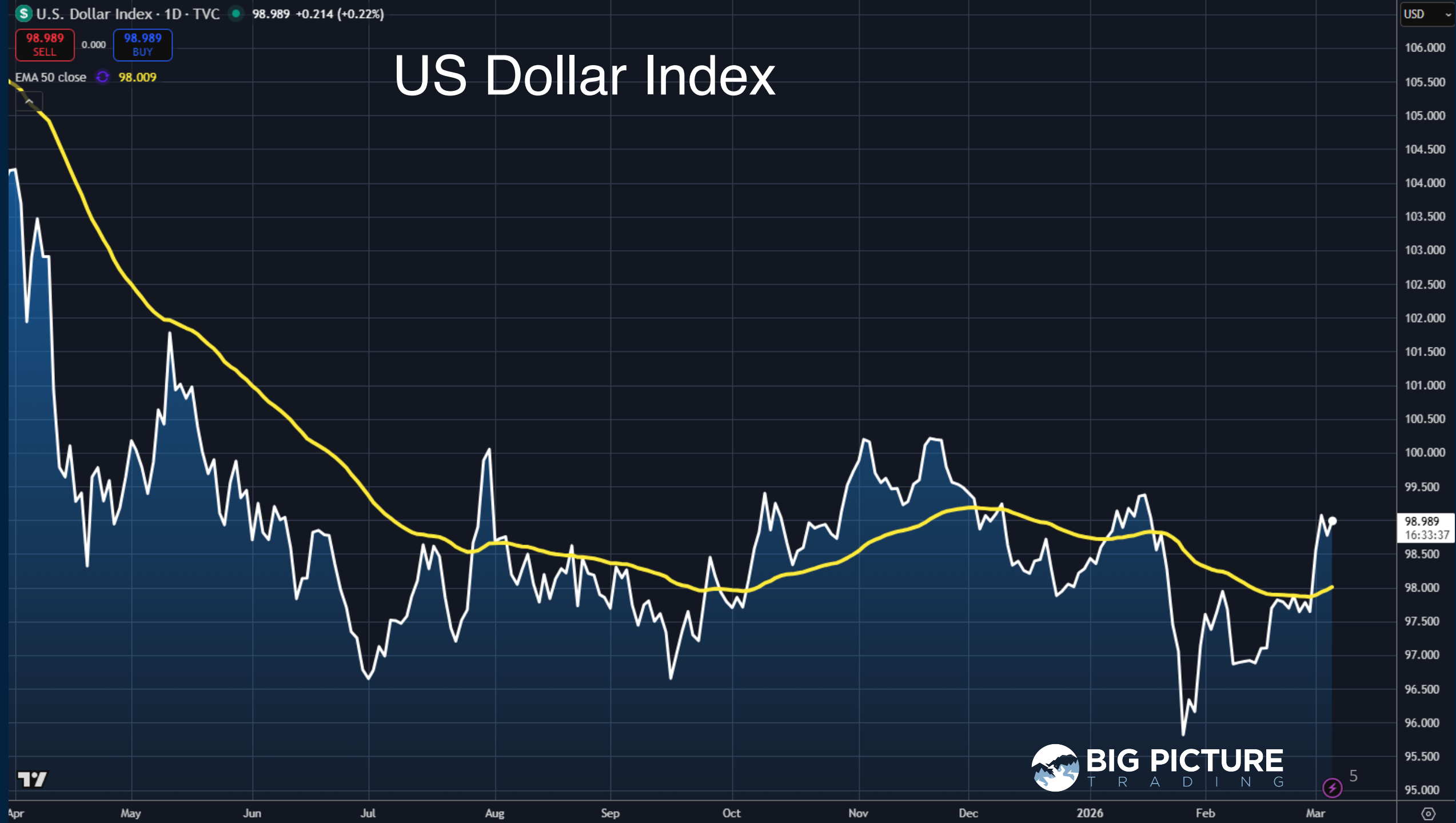
97.000

96.500

96.000

95.500

95.000



64.96 SELL 0.01 64.97 BUY  
EMA 50 close 62.27

# Crude Oil Futures (Continuous)



USD  
BLL

74.00  
73.00  
72.00  
71.00  
70.00  
69.00  
68.00  
67.00  
66.00  
64.97  
12:06:58  
64.00  
63.00  
62.00  
61.00  
60.00  
59.00  
58.00  
57.00  
56.00  
55.00  
54.00



5,172.7 SELL 0.5 5,173.2 BUY

EMA 50 close 4,868.9

# Gold Futures

USD  
apoz  
5,400.0  
5,200.0  
5,173.2  
14:32:57  
5,000.0  
4,800.0  
4,600.0  
4,400.0  
4,200.0  
4,000.0  
3,800.0  
3,600.0  
3,400.0  
3,200.0  
3,000.0  
2,800.0



7



Apr

May

Jun

Jul

Aug

Sep

Oct

Nov

Dec

2026

Feb

Mar





4.142  
SELL  
-0.003  
4.140  
BUY  
EMA 50 close 4.126%

# 10-year US Gov Treasury Yield



%  
4.600%  
4.550%  
4.500%  
4.450%  
4.400%  
4.350%  
4.300%  
4.250%  
4.200%  
4.150%  
4.117%  
15:01:44  
4.050%  
4.000%  
3.950%  
3.900%



Trade along with Patrick

**Become a Member Today**

**SIGN UP NOW!**



# Monthly Membership Includes:

- Daily “Macro Outlook” video
- Watch Patrick analyze and demonstrate trades LIVE during “Where’s the Trade”
- Daily LIVE Q&A
- Weekly position summary
- Hours of FREE educational videos and bootcamps
- Access to members only LIVE webinars

**SIGN UP NOW!**

