



# S&P500 Futures



S&P 500 E-mini Futures - 1D - CME 6,083.50 -3.75 (-0.06%)  
6,083.50 SELL 0.25 6,083.75 BUY  
EMA 50 close 5,931.64

USD  
6,200.00  
6,100.00  
6,000.00  
5,900.00  
5,800.00  
5,700.00  
5,600.00  
5,500.00  
5,400.00  
5,300.00  
5,200.00  
5,100.00  
5,000.00  
4,900.00  
4,800.00  
4,700.00  
4,600.00  
4,500.00  
4,400.00  
4,300.00  
4,200.00  
4,100.00  
4,000.00



# S&P500 % of Stocks above 50DMA

\$SPXA50R S&P 500 Percent of Stocks Above 50 Day Moving Average INDX

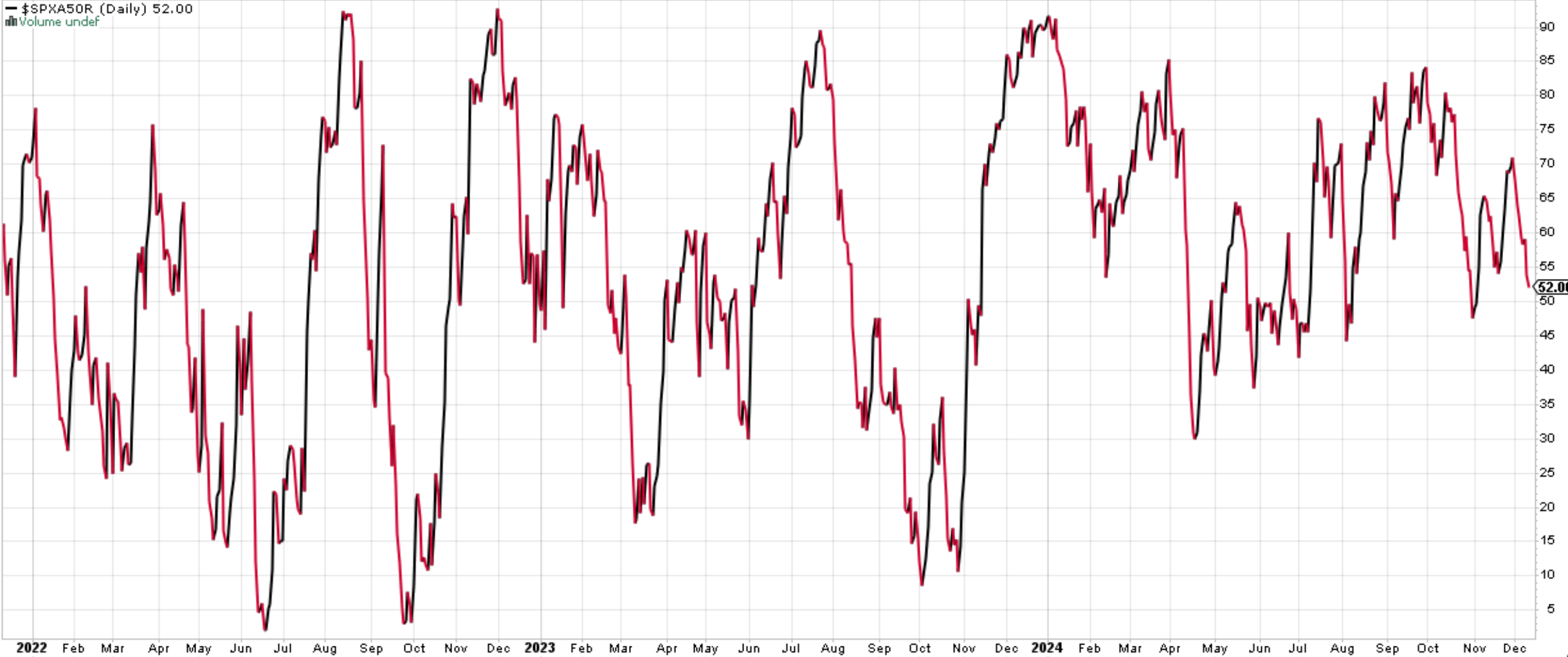
11-Dec-2024

© StockCharts.com

Open 54.80 High 55.40 Low 51.60 Close 52.00 Chg -1.80 (-3.35%) ▼

— \$SPXA50R (Daily) 52.00

▒ Volume undef



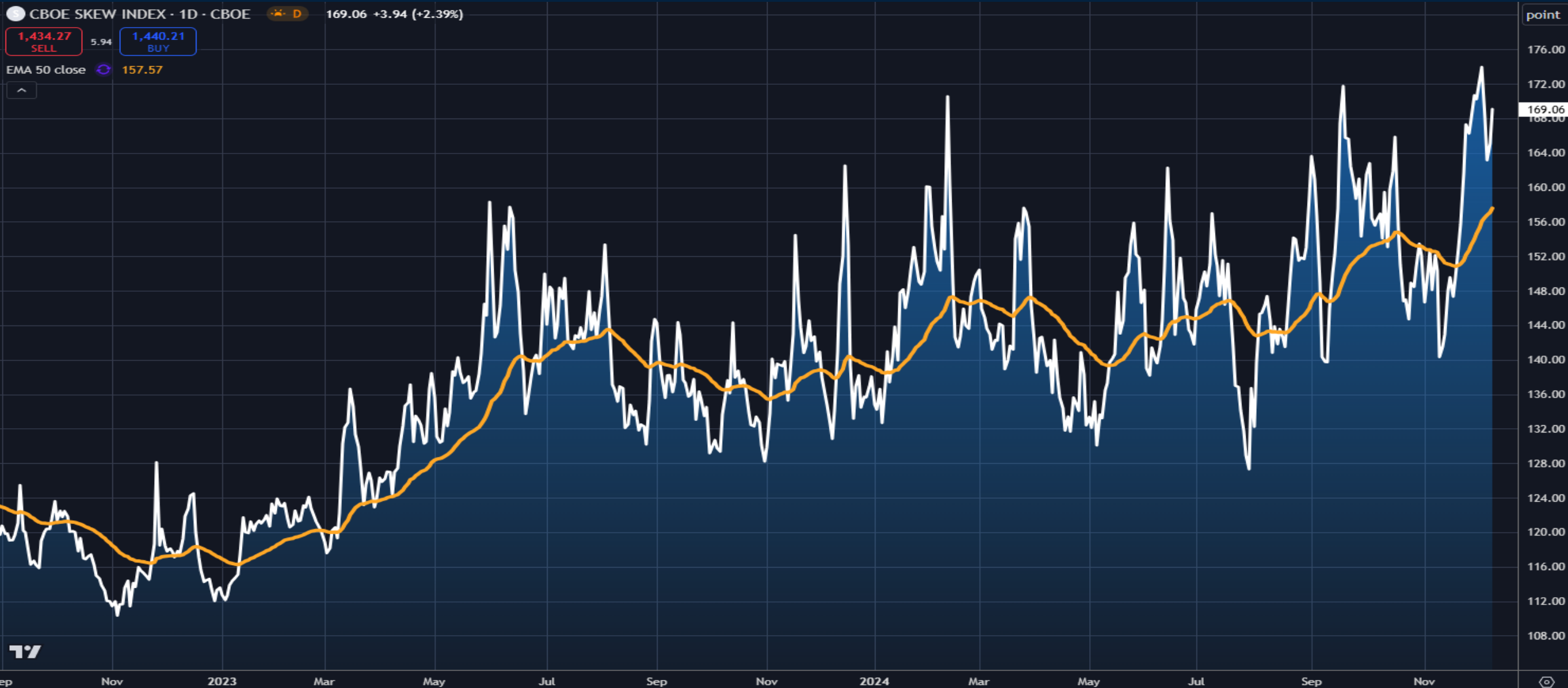
# S&P500 vs Russell2000 and MAGS



# Nasdaq % of Stocks above 50DMA



# CBOE SKEW INDEX



# CBOE Implied Correlation Index



# US Dollar Index



# Gold Futures Chart

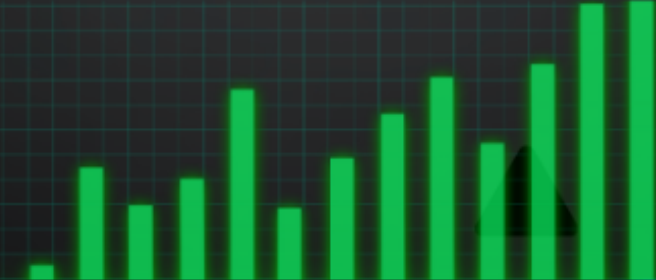


# Crude Oil Futures (Continuous)



NICK GALARNYK

PATRICK CERESNA



**THE LONG &**

**SHORT OF IT**

**CLICK TO WATCH!**

# Monthly Membership Includes:

- Daily “Macro Outlook” video
- Watch Patrick analyze and demonstrate trades LIVE during “Where’s the Trade”
- Daily LIVE Q&A
- Weekly position summary
- Hours of FREE educational videos and bootcamps
- Access to members only LIVE webinars

**SIGN UP NOW!**

